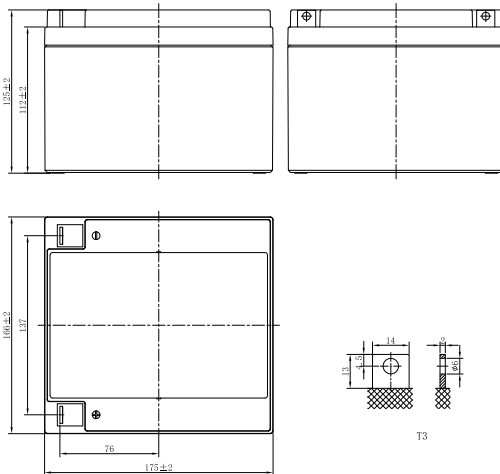


DJW SERIES

DJW12-26 (12V26Ah)



CHARACTERISTICS

Item	Specifications	
Rated Voltage	12V	
Nominal Capacity (25°C)	C ₂₀ : 1.75V/cell	26Ah
Dimension	Length	166mm (6.54inches)
	Width	175mm (6.89inches)
	Container Height	125mm (4.92inches)
	Total Height	125mm (4.92inches)
Approx Weight	8.20kg (18.1lbs)	
Terminal	T3	
Container Material	ABS (UL94 HB or V-0 optional)	
Short-circuit current	650A	
Internal Resistance (25°C)	Approx 11 mΩ (Fully charged)	
Operating Temp. Range	Discharge	-15~50°C (5~122°F)
	Charge	-20~40°C (-4~104°F)
	Storage	-15~40°C (5~104°F)
Nominal Operating Temp. Range	25±3°C (77±5°F)	
Max. Charging Current (25°C)	0.3C	
Charge voltage (25°C)	Standby Use	Cycle Use
	2.25-2.30V/cell	2.35-2.45V/cell
Temp. Coefficient	-3mV/cell/°C	-5mV/cell/°C
	40°C (104°F)	103%
Effect of temp. to Capacity	25°C (77°F)	100%
	0°C (32°F)	86%
	Self Discharge	≤3% per month at 25°C (77°F). DJW series batteries may be stored up to 6 months at 25°C (77°F) and then a freshening charge is required. For higher temperatures the time interval will be shorter.

DISCHARGE TABLE

Constant Current Discharge (Amperes) at 25°C (77°F)																
F.V/Time	5min	10min	15min	20min	30min	45min	1h	1.5h	2h	3h	4h	5h	6h	8h	10h	20h
1.85V/cell	78.0	53.5	41.6	34.5	25.8	18.9	15.5	11.3	8.90	6.43	5.12	4.36	3.73	2.93	2.39	1.27
1.80V/cell	83.9	56.6	43.6	35.8	26.7	19.4	15.9	11.6	9.06	6.53	5.19	4.42	3.79	2.98	2.41	1.29
1.75V/cell	88.3	59.0	45.1	36.9	27.3	19.8	16.2	11.8	9.23	6.63	5.27	4.48	3.84	3.02	2.44	1.30
1.70V/cell	92.5	61.3	46.6	37.9	28.0	20.2	16.4	12.0	9.38	6.73	5.34	4.54	3.88	3.05	2.46	1.31
1.67V/cell	95.7	63.1	47.7	38.7	28.5	20.6	16.7	12.2	9.47	6.80	5.39	4.58	3.91	3.07	2.48	1.32
1.60V/cell	101.6	65.7	49.4	39.8	29.3	21.1	17.1	12.4	9.66	6.92	5.48	4.65	3.97	3.11	2.52	1.34

Constant Power Discharge (Watts/cell) at 25°C (77°F)																
F.V/Time	5min	10min	15min	20min	30min	45min	1h	1.5h	2h	3h	4h	5h	6h	8h	10h	20h
1.85V/cell	147.5	101.8	79.7	66.4	50.0	36.6	30.1	22.1	17.5	12.6	10.1	8.60	7.38	5.82	4.74	2.54
1.80V/cell	157.1	107.1	83.1	68.6	51.3	37.5	30.7	22.5	17.7	12.8	10.2	8.71	7.48	5.91	4.79	2.57
1.75V/cell	163.7	110.6	85.3	70.2	52.4	38.2	31.2	22.8	18.0	13.0	10.3	8.81	7.56	5.96	4.84	2.60
1.70V/cell	169.7	114.2	87.7	71.9	53.4	38.8	31.7	23.2	18.2	13.2	10.5	8.92	7.64	6.02	4.88	2.62
1.67V/cell	174.2	116.8	89.5	73.2	54.2	39.4	32.1	23.4	18.4	13.3	10.6	8.99	7.71	6.06	4.91	2.65
1.60V/cell	181.3	120.3	91.9	74.9	55.4	40.1	32.7	23.9	18.7	13.5	10.7	9.11	7.80	6.15	4.98	2.67

DJW SERIES

DJW12-26 (12V26Ah)



APPLICATIONS

- Uninterruptable Power Supply (UPS)
- Electric Power System (EPS)
- Emergency backup power supply
- Alarm and security system
- Communication power supply
- DC power supply
- Auto control system

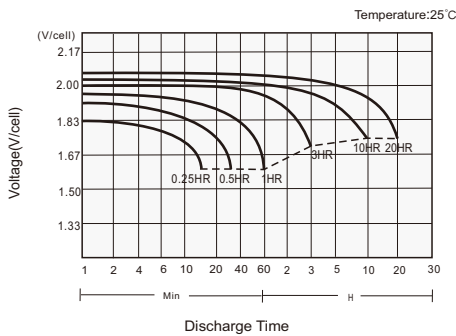
GENERAL FEATURES

- 5 years design life (25°C)
- Lead calcium alloy, sealed design, no watering required
- Puncture resistant micro-porous glass mat separators extend life
- Unique technology optimizes power capacity, cell consistency, and long-term reliability
- Designed for a wide range of applications

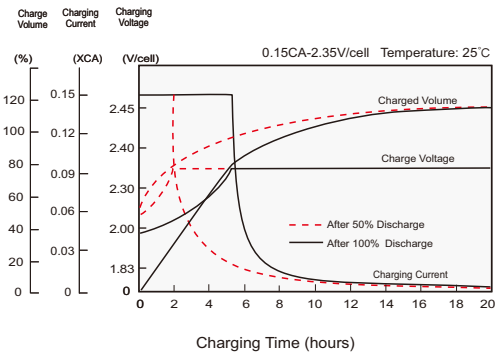
STANDARDS

- Compliance with IEC 60896 standards, EU Battery Directive
- UL, CE Approved
- Manufactured in Leoch@IATF 16949, ISO 45001, ISO 9001 and ISO 14001 certified production facilities

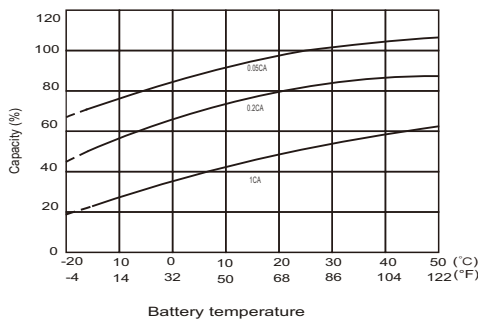
Discharge Characteristics



Charging Characteristics



Effects of Temperature on Capacity



Self Discharge Characteristics

