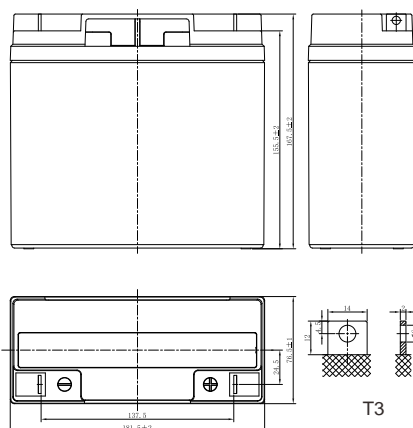


# DJW SERIES

## DJW12-20 (12V20Ah)



### CHARACTERISTICS

Item	Specifications	
Rated Voltage	12V	
Nominal Capacity (25°C)	C <sub>20</sub> , 1.75V/cell	20Ah
Dimension	Length	181.5mm (7.15inches)
	Width	76.5mm (3.01inches)
	Container Height	167.5mm (6.59inches)
	Total Height	167.5mm (6.59inches)
Approx Weight	6.00kg (13.2lbs)	
Terminal	T3	
Container Material	ABS (UL94 HB or V-0 optional)	
Short-circuit current	560A	
Internal Resistance (25°C)	Approx 14 mΩ (Fully charged)	
Operating Temp. Range	Discharge	-15~50°C (5~122°F)
	Charge	-20~40°C (-4~104°F)
	Storage	-15~40°C (5~104°F)
Nominal Operating Temp. Range	25±3°C (77±5°F)	
Max. Charging Current (25°C)	0.3C	
Charge voltage (25°C)	Standby Use	Cycle Use
	2.25-2.30V/cell	2.35-2.45V/cell
Temp. Coefficient	-3mV/cell/°C	-5mV/cell/°C
	40°C (104°F)	103%
Effect of temp. to Capacity	25°C (77°F)	100%
	0°C (32°F)	86%
	≤3% per month at 25°C (77°F). DJW series batteries may be stored up to 6 months at 25°C (77°F) and then a freshening charge is required. For higher temperatures the time interval will be shorter.	
Self Discharge		

### DISCHARGE TABLE

Constant Current Discharge (Amperes) at 25°C (77°F)																
F.V/Time	5min	10min	15min	20min	30min	45min	1h	1.5h	2h	3h	4h	5h	6h	8h	10h	20h
1.85V/cell	65.5	44.6	34.3	27.9	20.3	14.7	12.0	8.76	6.88	4.96	3.96	3.37	2.88	2.27	1.85	0.978
1.80V/cell	70.4	47.2	36.0	29.1	20.9	15.1	12.3	8.94	7.01	5.05	4.01	3.42	2.93	2.30	1.87	0.989
1.75V/cell	74.2	49.1	37.2	29.9	21.4	15.4	12.6	9.10	7.13	5.13	4.07	3.46	2.96	2.33	1.89	1.00
1.70V/cell	77.7	51.1	38.5	30.7	22.0	15.7	12.8	9.26	7.24	5.20	4.12	3.51	3.00	2.35	1.91	1.01
1.67V/cell	80.4	52.5	39.4	31.4	22.4	16.0	13.0	9.38	7.32	5.25	4.16	3.54	3.02	2.37	1.92	1.02
1.60V/cell	85.3	54.8	40.8	32.3	23.0	16.4	13.3	9.58	7.47	5.35	4.24	3.59	3.07	2.41	1.95	1.03
Constant Power Discharge (Watts/cell) at 25°C (77°F)																
F.V/Time	5min	10min	15min	20min	30min	45min	1h	1.5h	2h	3h	4h	5h	6h	8h	10h	20h
1.85V/cell	123.8	84.8	65.8	53.8	39.2	28.5	23.4	17.1	13.5	9.76	7.80	6.65	5.70	4.50	3.67	1.96
1.80V/cell	131.9	89.3	68.6	55.7	40.2	29.1	23.9	17.4	13.7	9.90	7.89	6.74	5.79	4.56	3.72	1.98
1.75V/cell	137.5	92.2	70.4	56.9	41.1	29.6	24.3	17.7	13.9	10.0	7.99	6.81	5.84	4.61	3.75	2.00
1.70V/cell	142.5	95.2	72.3	58.2	41.9	30.2	24.6	17.9	14.1	10.2	8.09	6.90	5.91	4.65	3.79	2.02
1.67V/cell	146.3	97.4	73.9	59.3	42.6	30.6	25.0	18.1	14.2	10.3	8.15	6.95	5.96	4.69	3.81	2.03
1.60V/cell	152.2	100.2	75.9	60.8	43.5	31.2	25.4	18.4	14.4	10.4	8.27	7.04	6.03	4.75	3.86	2.05

# DJW SERIES

## DJW12-20 (12V20Ah)



### APPLICATIONS

- Uninterruptable Power Supply (UPS)
- Electric Power System (EPS)
- Emergency backup power supply
- Alarm and security system
- Communication power supply
- DC power supply
- Auto control system

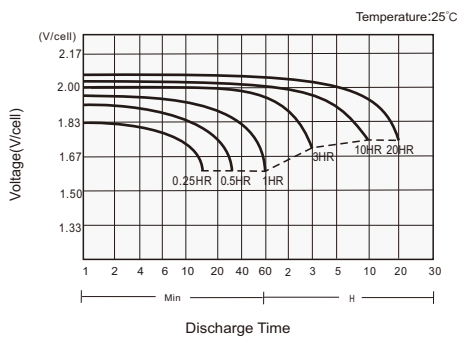
### GENERAL FEATURES

- 5 years design life (25°C)
- Lead calcium alloy, sealed design, no watering required
- Puncture resistant micro-porous glass mat separators extend life
- Unique technology optimizes power capacity, cell consistency, and long-term reliability
- Designed for a wide range of applications

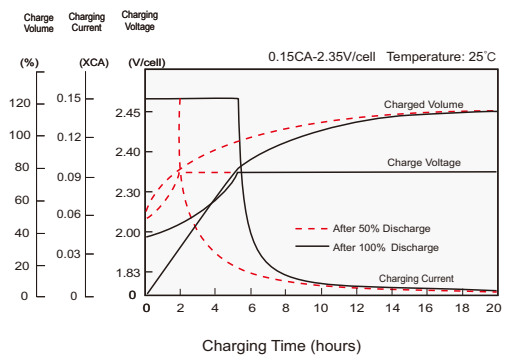
### STANDARDS

- Compliance with IEC 60896 standards, EU Battery Directive
- UL, CE Approved
- Manufactured in Leoch@IATF 16949, ISO 45001, ISO 9001 and ISO 14001 certified production facilities

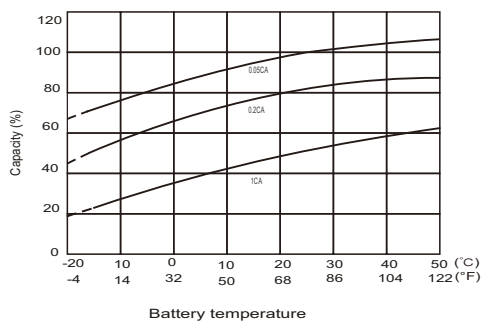
#### Discharge Characteristics



#### Charging Characteristics



#### Effects of Temperature on Capacity



#### Self Discharge Characteristics

