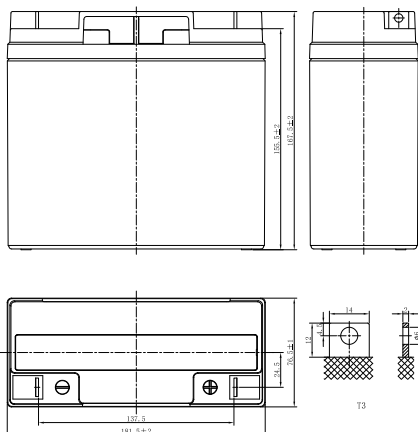


DJW SERIES

DJW12-17 (12V17Ah)



CHARACTERISTICS

Item	Specifications	
Rated Voltage	12V	
Nominal Capacity (25°C)	C ₂₀ , 1.75V/cell	17Ah
Dimension	Length	181.5mm (7.15inches)
	Width	76.5mm (3.01inches)
	Container Height	167.5mm (6.59inches)
	Total Height	167.5mm (6.59inches)
Approx Weight	5.70kg (12.6lbs)	
Terminal	T3	
Container Material	ABS (UL94 HB or V-0 optional)	
Short-circuit current	476A	
Internal Resistance (25°C)	Approx 16 mΩ (Fully charged)	
Operating Temp. Range	Discharge	-15~50°C (5~122°F)
	Charge	-20~40°C (-4~104°F)
	Storage	-15~40°C (5~104°F)
Nominal Operating Temp. Range	25±3°C (77±5°F)	
Max.Charging Current (25°C)	0.3C	
Charge voltage (25°C)	Standby Use	Cycle Use
	2.25-2.30V/cell	2.35-2.45V/cell
Temp. Coefficient	-3mV/cell/°C	
	-5mV/cell/°C	
Effect of temp. to Capacity	40°C (104°F)	103%
	25°C (77°F)	100%
	0°C (32°F)	86%
Self Discharge	≤3% per month at 25°C (77°F). DJW series batteries may be stored up to 6 months at 25°C (77°F) and then a freshening charge is required. For higher temperatures the time interval will be shorter.	

DISCHARGE TABLE

Constant Current Discharge (Amperes) at 25°C (77°F)																
F.V/Time	5min	10min	15min	20min	30min	45min	1h	1.5h	2h	3h	4h	5h	6h	8h	10h	20h
1.85V/cell	38.9	34.0	27.4	22.9	17.3	12.8	10.5	7.55	6.07	4.44	3.49	2.91	2.49	1.95	1.58	0.833
1.80V/cell	40.9	35.7	28.4	23.7	17.7	13.0	10.7	7.67	6.17	4.50	3.55	2.95	2.52	1.98	1.60	0.841
1.75V/cell	42.8	37.4	29.5	24.4	18.1	13.3	10.9	7.79	6.26	4.57	3.60	2.98	2.55	2.00	1.61	0.850
1.70V/cell	44.9	39.2	30.5	25.1	18.5	13.6	11.0	7.92	6.36	4.64	3.65	3.03	2.59	2.03	1.63	0.859
1.67V/cell	46.1	40.2	31.2	25.5	18.8	13.7	11.1	8.00	6.42	4.67	3.67	3.05	2.61	2.05	1.64	0.864
1.60V/cell	48.9	42.7	32.6	26.5	19.4	14.1	11.4	8.17	6.54	4.77	3.75	3.11	2.65	2.08	1.67	0.876
Constant Power Discharge (Watts/cell) at 25°C (77°F)																
F.V/Time	5min	10min	15min	20min	30min	45min	1h	1.5h	2h	3h	4h	5h	6h	8h	10h	20h
1.85V/cell	74.7	65.0	52.5	44.2	33.3	24.8	20.4	14.7	11.9	8.72	6.89	5.75	4.93	3.88	3.13	1.66
1.80V/cell	78.1	67.9	54.3	45.3	34.0	25.2	20.7	14.9	12.0	8.83	6.98	5.82	4.99	3.93	3.16	1.68
1.75V/cell	81.5	70.8	56.0	46.5	34.7	25.7	21.0	15.1	12.2	8.94	7.06	5.88	5.04	3.97	3.20	1.70
1.70V/cell	84.8	73.8	57.7	47.6	35.3	26.1	21.2	15.3	12.4	9.06	7.15	5.95	5.10	4.01	3.24	1.72
1.67V/cell	86.8	75.5	58.7	48.4	35.7	26.3	21.4	15.5	12.5	9.12	7.20	5.99	5.14	4.04	3.26	1.73
1.60V/cell	91.4	79.4	60.9	49.9	36.6	26.8	21.8	15.7	12.7	9.27	7.31	6.08	5.21	4.10	3.31	1.76

DJW SERIES

DJW12-17 (12V17Ah)



APPLICATIONS

- Uninterruptable Power Supply (UPS)
- Electric Power System (EPS)
- Emergency backup power supply
- Alarm and security system
- Communication power supply
- DC power supply
- Auto control system

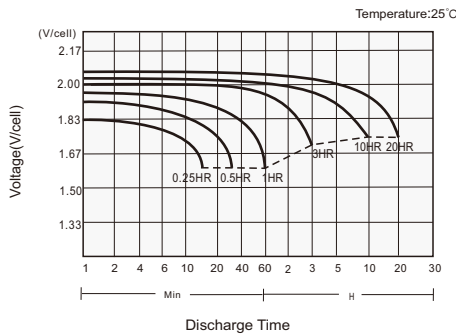
GENERAL FEATURES

- 5 years design life (25°C)
- Lead calcium alloy, sealed design, no watering required
- Puncture resistant micro-porous glass mat separators extend life
- Unique technology optimizes power capacity, cell consistency, and long-term reliability
- Designed for a wide range of applications

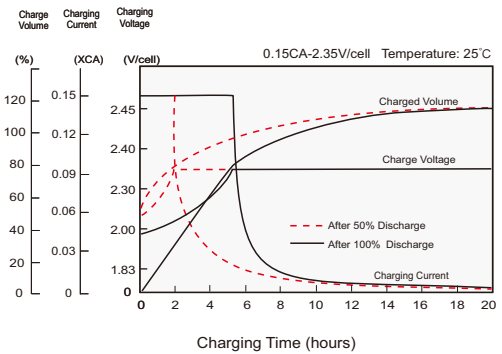
STANDARDS

- Compliance with IEC 60896 standards, EU Battery Directive
- UL, CE Approved
- Manufactured in Leoch@IATF 16949, ISO 45001, ISO 9001 and ISO 14001 certified production facilities

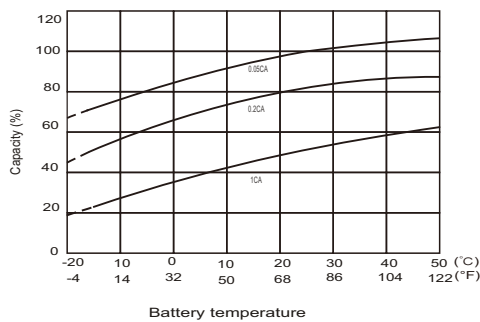
Discharge Characteristics



Charging Characteristics



Effects of Temperature on Capacity



Self Discharge Characteristics

