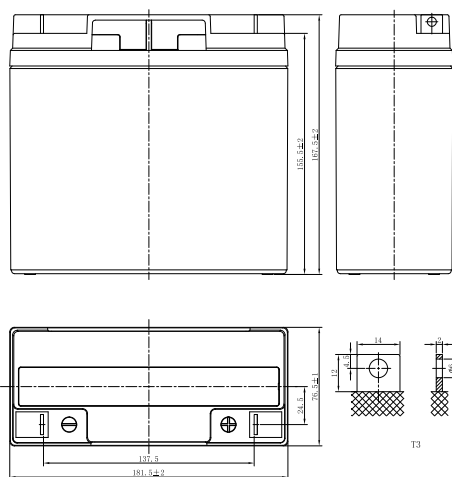


# DJW SERIES

## DJW12-15 (12V15Ah)



### CHARACTERISTICS

| Item                          | Specifications  |                      |
|-------------------------------|---|----------------------|
| Rated Voltage                 | 12V   |                      |
| Nominal Capacity (25°C)       | C <sub>20</sub> : 1.75V/cell  | 15Ah                 |
| Dimension                     | Length  | 181.5mm (7.15inches) |
|                               | Width   | 76.5mm (3.01inches)  |
|                               | Container Height  | 167.5mm (6.59inches) |
|                               | Total Height  | 167.5mm (6.59inches) |
| Approx Weight                 | 4.70kg (10.4lbs)  |                      |
| Terminal                      | T3  |                      |
| Container Material            | ABS (UL94 HB or V-0 optional)   |                      |
| Short-circuit current         | 420A  |                      |
| Internal Resistance (25°C)    | Approx 18 mΩ (Fully charged)  |                      |
| Operating Temp. Range         | Discharge   | -15~50°C (5~122°F)   |
|                               | Charge  | -20~40°C (-4~104°F)  |
|                               | Storage   | -15~40°C (5~104°F)   |
| Nominal Operating Temp. Range | 25±3°C (77±5°F)   |                      |
| Max. Charging Current (25°C)  | 0.3C  |                      |
| Charge voltage (25°C)         | Standby Use   | Cycle Use            |
|                               | 2.25-2.30V/cell   | 2.35-2.45V/cell      |
| Temp. Coefficient             | -3mV/cell/°C  | -5mV/cell/°C         |
|                               | 40°C (104°F)  | 103%                 |
| Effect of temp. to Capacity   | 25°C (77°F)   | 100%                 |
|                               | 0°C (32°F)  | 86%                  |
|                               | ≤3% per month at 25°C (77°F).<br>DJW series batteries may be stored up to 6 months at 25°C (77°F) and then a freshening charge is required.<br>For higher temperatures the time interval will be shorter. |                      |
| Self Discharge                |   |                      |

### DISCHARGE TABLE

| Constant Current Discharge (Amperes) at 25°C (77°F)  |       |       |       |       |       |       |      |      |      |      |      |      |      |      |      |       |
|--|-------|-------|-------|-------|-------|-------|------|------|------|------|------|------|------|------|------|-------|
| F.V/Time   | 5min  | 10min | 15min | 20min | 30min | 45min | 1h   | 1.5h | 2h   | 3h   | 4h   | 5h   | 6h   | 8h   | 10h  | 20h   |
| 1.85V/cell   | 47.6  | 32.6  | 25.4  | 20.6  | 15.2  | 11.1  | 9.04 | 6.58 | 5.13 | 3.71 | 2.95 | 2.51 | 2.15 | 1.70 | 1.39 | 0.733 |
| 1.80V/cell   | 51.2  | 34.6  | 26.6  | 21.5  | 15.7  | 11.4  | 9.26 | 6.71 | 5.23 | 3.77 | 3.00 | 2.55 | 2.19 | 1.72 | 1.40 | 0.742 |
| 1.75V/cell   | 53.9  | 36.0  | 27.5  | 22.1  | 16.1  | 11.7  | 9.45 | 6.84 | 5.32 | 3.83 | 3.04 | 2.58 | 2.21 | 1.74 | 1.42 | 0.750 |
| 1.70V/cell   | 56.5  | 37.4  | 28.4  | 22.7  | 16.5  | 11.9  | 9.62 | 6.96 | 5.40 | 3.88 | 3.08 | 2.62 | 2.24 | 1.76 | 1.43 | 0.756 |
| 1.67V/cell   | 58.4  | 38.5  | 29.1  | 23.2  | 16.8  | 12.1  | 9.77 | 7.04 | 5.46 | 3.92 | 3.11 | 2.64 | 2.26 | 1.77 | 1.44 | 0.762 |
| 1.60V/cell   | 62.0  | 40.1  | 30.1  | 23.9  | 17.2  | 12.4  | 9.99 | 7.20 | 5.57 | 3.99 | 3.16 | 2.68 | 2.29 | 1.80 | 1.46 | 0.770 |
| Constant Power Discharge (Watts/cell) at 25°C (77°F) |       |       |       |       |       |       |      |      |      |      |      |      |      |      |      |       |
| F.V/Time   | 5min  | 10min | 15min | 20min | 30min | 45min | 1h   | 1.5h | 2h   | 3h   | 4h   | 5h   | 6h   | 8h   | 10h  | 20h   |
| 1.85V/cell   | 90.0  | 62.1  | 48.6  | 39.8  | 29.4  | 21.6  | 17.6 | 12.8 | 10.1 | 7.28 | 5.82 | 4.96 | 4.26 | 3.36 | 2.75 | 1.47  |
| 1.80V/cell   | 95.9  | 65.4  | 50.7  | 41.1  | 30.2  | 22.1  | 18.0 | 13.1 | 10.2 | 7.39 | 5.89 | 5.03 | 4.32 | 3.41 | 2.79 | 1.48  |
| 1.75V/cell   | 99.9  | 67.5  | 52.1  | 42.1  | 30.8  | 22.4  | 18.3 | 13.3 | 10.4 | 7.49 | 5.96 | 5.08 | 4.36 | 3.44 | 2.81 | 1.50  |
| 1.70V/cell   | 103.6 | 69.7  | 53.5  | 43.0  | 31.4  | 22.9  | 18.5 | 13.5 | 10.5 | 7.58 | 6.03 | 5.15 | 4.41 | 3.47 | 2.84 | 1.51  |
| 1.67V/cell   | 106.3 | 71.3  | 54.6  | 43.8  | 31.9  | 23.2  | 18.8 | 13.6 | 10.6 | 7.65 | 6.08 | 5.18 | 4.44 | 3.50 | 2.86 | 1.52  |
| 1.60V/cell   | 110.6 | 73.4  | 56.1  | 44.9  | 32.6  | 23.6  | 19.1 | 13.8 | 10.8 | 7.77 | 6.18 | 5.25 | 4.50 | 3.54 | 2.89 | 1.54  |

# DJW SERIES

## DJW12-15 (12V15Ah)



### APPLICATIONS

- Uninterruptable Power Supply (UPS)
- Electric Power System (EPS)
- Emergency backup power supply
- Alarm and security system
- Communication power supply
- DC power supply
- Auto control system

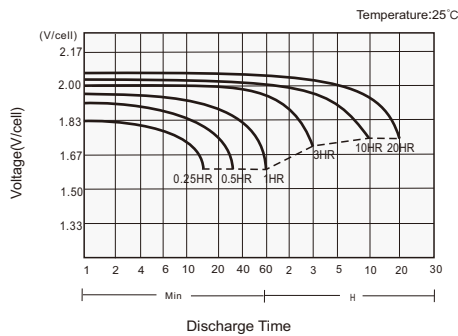
### GENERAL FEATURES

- 5 years design life (25°C)
- Lead calcium alloy, sealed design, no watering required
- Puncture resistant micro-porous glass mat separators extend life
- Unique technology optimizes power capacity, cell consistency, and long-term reliability
- Designed for a wide range of applications

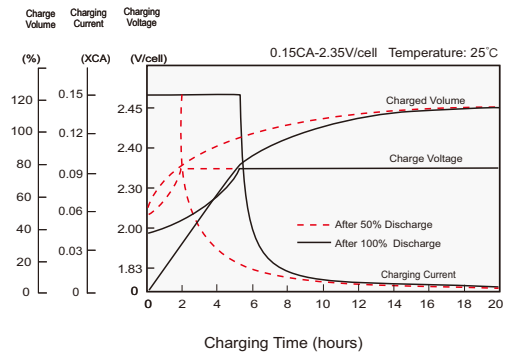
### STANDARDS

- Compliance with IEC 60896 standards, EU Battery Directive
- UL, CE Approved
- Manufactured in Leoch@IATF 16949, ISO 45001, ISO 9001 and ISO 14001 certified production facilities

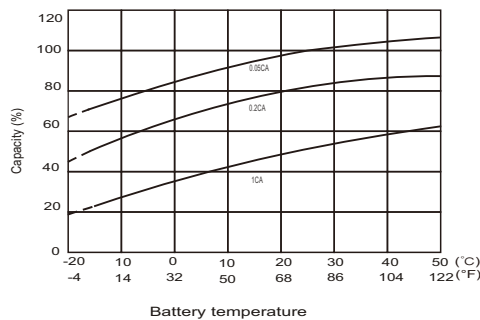
#### Discharge Characteristics



#### Charging Characteristics



#### Effects of Temperature on Capacity



#### Self Discharge Characteristics

